



Montecito Sanitary District

1042 Monte Cristo Lane
Santa Barbara, CA 93108

A Public Service Agency

Phone: (805) 969-4200
www.montsan.org

MONTECITO SANITARY DISTRICT

STAFF REPORT – 3

DATE: October 1, 2024
TO: Board of Directors
FROM: John Weigold, General Manager
Bryce Swetek, Engineering Manager
SUBJECT: Consideration of Change Order Allowance Increase for the Protective Measures of District Facilities (January 2023 Storm) Project

RECOMMENDATION:

Staff recommends that the Board discuss and consider:

1. Authorizing the General Manager to approve expenditures of up to \$326,459.40 (30%) as a change order allowance with Cushman Contracting for the creek bank restoration work located at four different project sites within the District's boundaries.

DISCUSSION:

Background – In January of 2023, District facilities became vulnerable to potential damage/failure due to a storm event. Staff classified these vulnerable facilities into the following projects:

- Project 1 - Manhole 616-4D
- Project 2 - Manhole 638-4C
- Project 3 - Pipe L333-7
- Project 4 - Pipe L380-5

Each project is a result of creekbank failures. The purpose of each project is to provide protective measures to the facilities to limit the possibility of damage and provide better long-term service life. Together, these four projects are considered as the Protective Measures of District Facilities (January 2023 Storm) project (Protective Measures).

Discussion – Prior to mobilization of the project, the District's contractor (Cushman) requested two change orders. One change order includes dewatering work for Projects 2 and 3. The other includes work for relocating construction materials for the Owner of 204

Olive Mill. Additional information regarding these change orders and justification is provided in the Change Order documents themselves and are attached to this staff report. The total cost of these change orders, amounting to \$96,332, has used up a significant amount of the General Manager's original authority of \$115, 386.5, or 10% of the original bid.

Additionally, staff is already aware of two upcoming and significant change orders. One of these future change orders is dewatering for Project 1, which can be explained in a similar manner to Project 2 and 3. The other change order, which will be completed on a time and materials (T&M) basis, will be to address significant erosion damage that occurred upstream of our manhole, located at Project 2. This erosion occurred after the original January 2023 Storm Event and after design had been significantly completed. Staff plans to direct Cushman to address this erosion in a similar manner to the rest of the project (angular boulders). This work is critical as it's only a matter of time before the erosion reaches the manhole. See photos 1 and 2 below to document the change of condition.



Photo 1: Site area prior to erosion



Photo 2: Site area after erosion

Fiscal Impact – This project was included in the Fiscal Year 2024-25 Capital Improvement Project budget at \$1,100,000. The original bid result was \$1,154,865.00. An additional 30% of the original bid is significant, however, Staff anticipates two-thirds of the change order amount will be offset by the anticipated FEMA/CalOES reimbursement process. Additionally, there is room in the budget for adjustment, if necessary.

Analysis – Justifications – Staff understands these change orders are significant, but they are warranted. The Staff recommendation for GM authority of 30% in lieu of 10% would allow for streamlined work for the additional upcoming change orders as well as other potential unforeseen work, as needed.

DEPARTMENTS INVOLVED: Engineering and Collections

ATTACHMENTS:

1. Change Order No. 1
2. Change Order No. 2



PROJECT: PROTECTIVE MEASURES OF DISTRICT FACILITIES (JANUARY 2023 STORM)
 BID NO.: 2024-01

PREPARED: September 27, 2024

DESCRIPTION:

1. *Install creek water bypass per dewater concept drawings for Project 2.*
Additional Cost = \$35,320.00
2. *Install creek water bypass per dewater concept drawings for Project 3.*
Additional Cost = \$49,390.00

Total Additional Cost = \$84,710.00
Total Additional Working Days = 4

REASON FOR CHANGE:

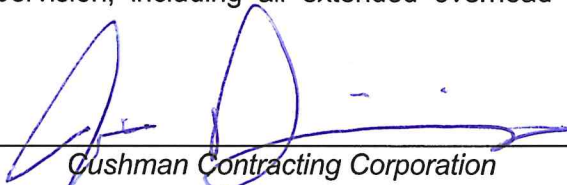
1. *At the time of finalizing the project bid specifications (May 2024), it was anticipated water levels would be low enough to perform construction without the need to dewater. As the design and permitting process with environmental agencies went on through summer, it was determined dewatering at these project sites would be required. This work includes installation of gravel/sand bags, pumps, hose piping, and other equipment/materials as needed to bypass creek water downstream of the creek work limits. Additional contract working days were discussed between the District and Cushman; they are required to adequately install and remove the bypass system as needed.*

Original Contract Amount.....	\$1,154,865.00
Total Contract Amount Change by Previous Change Orders.....	\$0.00
Contract Amount Prior to this Change Order:.....	\$1,154,865.00
Contract Amount to be Increased by this Change Order.....	\$84,710.00
Final Adjusted Contract Amount.....	\$1,239,575.00
Original Contract Working Days.....	44 Days
Total Change of Contract Working Days by Previous Change Orders.....	0 Days
Contract Working Days Prior to Change Order.....	44 Days

Contract Working Days to be Increased by this Change Order.....	4 Days
Final Adjusted Working Days.....	48 Days

The changes noted above, in both time and costs, include all compensation and adjustments for all changes, both direct and indirect, including scheduling and sequence of work, equipment and material delivery, project acceleration, costs for labor, material, equipment, incidental items and supervision, and extended overhead.

This adjustment shall include full payment for all items required for such work, including, without limitation: all compensation for all direct and indirect costs for such work; costs for adjustments to scheduling and sequence of work; equipment; materials delivery; project "acceleration"; costs for labor, material, equipment and incidental items; overhead costs and supervision, including all extended overhead and office overhead of every nature and description.

ACCEPTED:  10/01/2024
Date

APPROVED:  10/01/2024
Date
General Manager, Montecito Sanitary District

Attachments:

- Cushman Proposal dated September 27, 2024

DISTRIBUTION:

- Jim Dinning, Cushman Contracting, jim@cushmancontracting.com
- Lee Cushman, Cushman Contracting, lrc@cushmancontracting.com
- Frankie Ortiz, Cushman Contracting, frankie@cushmancontracting.com
- Alex Champman, MNS Engineers, achapman@mnsengineers.com
- Jason Mate, MNS Engineers, jmate@mnsengineers.com
- Carrie Poytress, Stantec, carrie.poytress@stantec.com
- Bryce Swetek, MSD, bswetek@montsan.org
- John Weigold, MSD, jweigold@montsan.org
- Ricardo Larroude, MSD, rlarroude@montsan.org

CUSHMAN CONTRACTING CORPORATION

Santa Barbara, CA

Est. 1969

Montecito Sanitary District (MSD)
1042 Monte Cristo Lane
Santa Barbara, CA 93101

09/27/2024

ATTN: Bryce Swetek, P.E.
Engineering Manager

REF: MSD Protective Measures of District Facilities

Subject: Change Order for Creek Bypass at Locations 2 and 3

Mr. Swetek,

We are in receipt of your drawings (see attached). Which requires work outside of the original contract scope. This work consists of adding Creek Bypasses to project locations 2 and 3. Please issue a change order for such work in the amounts shown below.

Locations

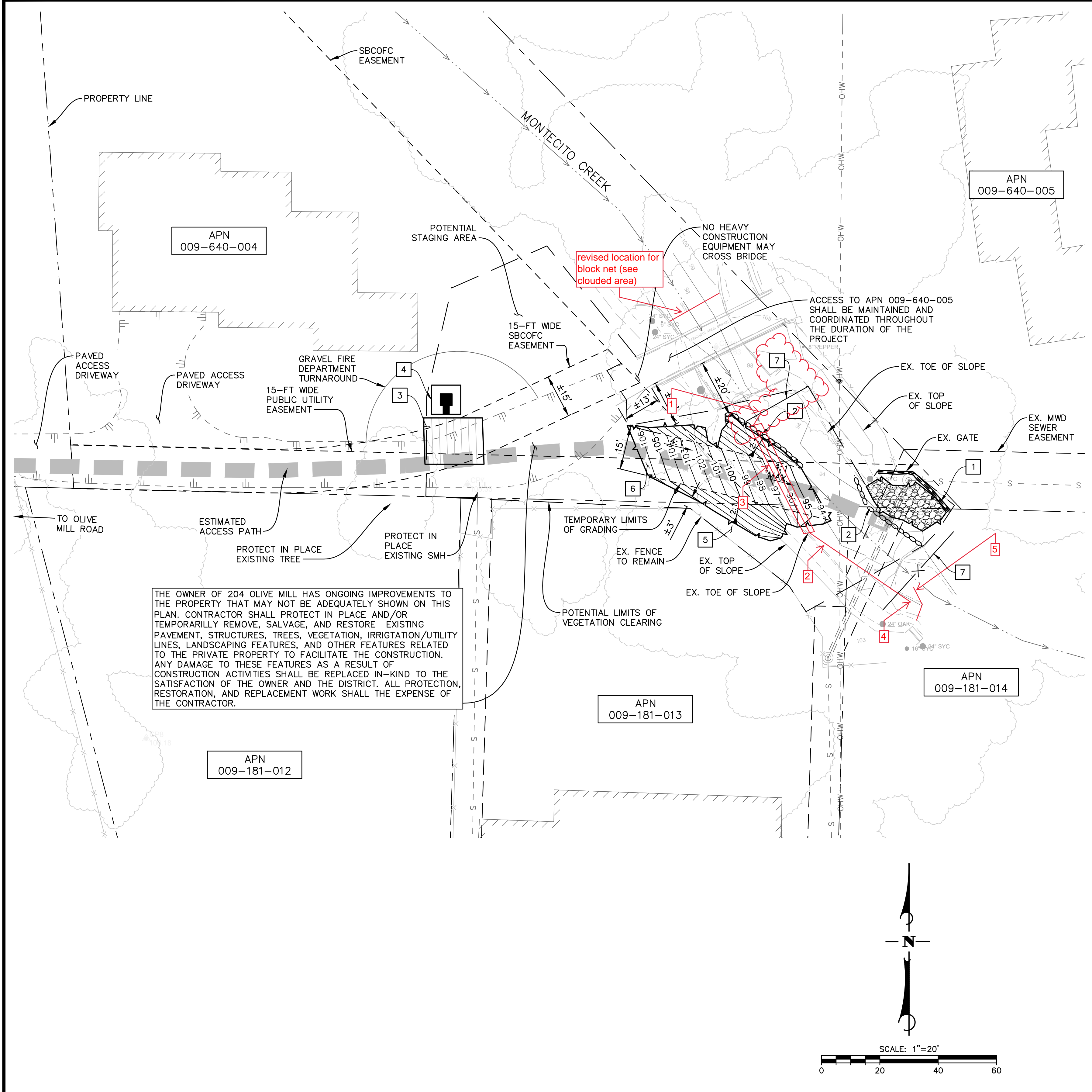
- #2 - \$35,320
- #3 - \$49,390

As you are aware we plan to start work at locations #2 and #3 on September 30th. We would appreciate a quick turnaround on the change order so we may proceed with the additional work. If you have any questions or would like to discuss this change order in more detail, please contact Jim Dinning or myself.

Sincerely,



Frankie Ortiz



EROSION CONTROL IMPLEMENTATION NOTES

1. INSTALL FIBER ROLLS PER CALTRANS CONSTRUCTION SITE BMP MANUAL SC-5 TEMPORARY WATER POLLUTION CONTROL DETAIL T56.
2. INSTALL GRAVEL BAG/EARTHEN BERM PER CALTRANS CONSTRUCTION SITE BMP MANUAL SC-6.
3. INSTALL TEMPORARY CONSTRUCTION ENTRANCE/EXIT WITH CORRUGATED STEEL PANELS PER CALTRANS CONSTRUCTION SITE BMP MANUAL TC-1 TEMPORARY WATER POLLUTION CONTROL DETAIL T58.
4. INSTALL TEMPORARY ENTRANCE/EXIT TIRE WASH PER CALTRANS SITE BMP MANUAL TC-3.
5. REMOVE LANDSCAPING AND BOULDERS AS NECESSARY FOR ACCESS. CONTRACTOR TO REPLACE ITEMS AFTER CONSTRUCTION. EXISTING FENCE TO REMAIN IN PLACE.
6. CONSTRUCT TEMPORARY DIRT ACCESS RAMP AS NECESSARY TO ACCESS CREEK.
7. Block nets (mesh size not to exceed 3/16th-inch) will be erected upstream and downstream of the work area and placed at an angle in low-velocity flow at the direction of a qualified biologist.

DEWATERING CONSTRUCTION NOTES

1. 5 horse power submersible pump with 3/16" mesh screening. Pump shall be located in existing pool of water, where there is a natural low spot and no sand bags are required. Pump to be installed each working day prior to construction activities and removed by the end of each working day. Pump size to be verified in the field.
2. 4" lay-flat hose. Hose to be installed each working day prior to construction activities and removed by the end of each working day. Hose to be placed away from construction equipment. Hose size to be verified in the field.
3. 12" steel casing. Casing to be installed under earthen ramp and shall remain until project completion. Hose shall be installed within the casing to avoid constructing equipment. Casing size to be field verified.
4. Discharge point away from construction and downstream of block net.
5. Settling Basin. Utilize GB/EB, per Caltrans Construction Site BMP Manual SC-6, and existing bank topography/rip rap to reduce velocity discharge and capture sediment prior to water returning to main channel.

GENERAL EROSION CONTROL NOTES

1. TEMPORARY EROSION AND SEDIMENT CONTROL MEASURES SHALL USE BEST MANAGEMENT PRACTICES OUTLINED IN THE CALTRANS CONSTRUCTION SITE BMP MANUAL AND CALIFORNIA STORMWATER QUALITY ASSOCIATION (CASQA) BMP HANDBOOK.
2. ALL ONSITE STOCK-PILED SOILS AND SPOILS FROM EXCAVATION SHALL BE PROTECTED AND/OR COVERED PER CALTRANS CONSTRUCTION SITE BMP MANUAL SS-9 TEMPORARY WATER POLLUTION CONTROL DETAIL (TEMPORARY COVER) T53.
3. CLEARING AND GRUBBING ACTIVITIES FOR CONSTRUCTION ACCESS AND CONSTRUCTION SITE SHALL BE IMPLEMENTED AS NECESSARY FOR ACCESS AND CONSTRUCTION ONLY. ALL BOULDERS, ROCKS, AND FENCING REMOVED FROM THE CONSTRUCTION SITE OR CONSTRUCTION ACCESS SHALL BE RETURNED TO PRE-CONSTRUCTION CONDITIONS.
4. THE CONTRACTOR SHALL BE RESPONSIBLE FOR MAINTAINING AND CONTROLLING ALL DRAINAGE TO AND FROM THE SITE. CONTROL OF SURFACE WATERS SHALL BE SUCH THAT EXISTING DRAINAGE PATTERNS ARE NOT DISTURBED OR ALTERED TO INCREASE THE AMOUNT AND/OR INTENSITY OF RUNOFF WATER AND SILT TO ADJACENT PRIVATE PROPERTIES, COUNTY RIGHT-OF-WAY AND EXISTING DRAINAGE STRUCTURES.
5. THE CONTRACTOR SHALL ENSURE ALL PROTECTION MEASURES ARE IN PLACE PRIOR TO THE RAINY SEASON. THE PROTECTION MEASURES MAY NEED TO BE INSTALLED DURING OTHER PARTS OF THE YEAR SHOULD RAIN BE IMMINENT.
6. THE CONTRACTOR SHALL ADJUST THE LIMITS OF THE PROTECTION MEASURES AS HIS WORK PROGRESSES.
7. THE CONTRACTOR SHALL ADJUST THE LIMITS OF THE PROTECTION MEASURES SHOULD THEY BE INADEQUATE TO CONTROL RUNOFF OF SILT LADEN WATER.
8. THE PROTECTION MEASURES MAY BE TEMPORARILY MOVED OUT OF THE CONTRACTOR'S WAY TO FACILITATE CONSTRUCTION, PROVIDED THEY ARE REINSTALLED PRIOR TO THE NEXT RAIN STORM.
9. THE CONTRACTOR SHALL ADVISE HIS CREW OF THE INTENT OF THE PROTECTION MEASURES PRIOR TO THE START OF THE RAINY SEASON. THE CREW IS ENCOURAGED TO MONITOR THE EFFECTIVENESS OF THE SYSTEM AND ALERT THE CONTRACTOR OF ANY FAILURES OR PROBLEMS.
10. STAGING, REFUELING OF EQUIPMENT AND MATERIALS STORAGE AREAS MAY CHANGE THROUGHOUT CONSTRUCTION, AS REQUIRED. THE AREAS SHALL BE INSPECTED FREQUENTLY TO ENSURE NO SPILLED HAZARDOUS MATERIALS CONTAMINATE THE GROUND. SHOULD THIS OCCUR, THE SPILL SHALL BE CLEANED UP IMMEDIATELY. REFUELING OF EQUIPMENT AND STORAGE OF HAZARDOUS MATERIALS SHALL NOT BE LOCATED NEAR STORM DRAIN INLETS, EXISTING RESIDENCES OR DRAINAGE SWALES.
11. EROSION CONTROL DEVICES SHOWN ON THIS PLAN MAY BE REMOVED WHEN APPROVED BY THE ENGINEER IF THE CONSTRUCTION OPERATION HAS PROGRESSED TO THE POINT WHERE THEY ARE NO LONGER REQUIRED.
12. THE PLACEMENT OF ADDITIONAL DEVICES TO REDUCE EROSION DAMAGE AND CONTAIN POLLUTANTS WITHIN THE SITE IS LEFT TO THE DISCRETION OF THE CONTRACTOR. ADDITIONAL DEVICES AS NEEDED SHALL BE INSTALLED TO RETAIN SEDIMENTS AND OTHER POLLUTANTS ON SITE.
13. EVERY EFFORT SHOULD BE MADE TO ELIMINATE THE DISCHARGE OF NON STORM WATER FROM THE PROJECT SITES AT ALL TIMES.
14. ERODED SEDIMENTS AND OTHER POLLUTANTS MUST BE RETAINED ON-SITE AND MAY NOT BE TRANSPORTED FROM THE SITE VIA SHEET FLOW, SWALES, AREA DRAINS, NATURAL DRAINAGE COURSES OR WIND.
15. FUELS, OILS, SOLVENTS, AND OTHER TOXIC MATERIALS MUST BE STORED IN ACCORDANCE WITH THEIR LISTING AND AREA NOT TO CONTAMINATE THE SOILS AND SURFACE WATERS. ALL APPROVED STORAGE CONTAINERS ARE TO BE PROTECTED FROM THE WEATHER. SPILLS MUST BE CLEANED UP IMMEDIATELY AND DISPOSED OF IN A PROPER MANNER. SPILLS MAY NOT BE WASHED INTO THE DRAINAGE SYSTEM.
16. CONTRACTORS ARE RESPONSIBLE TO INSPECT ALL EROSION CONTROL DEVICES BMPs ARE INSTALLED AND FUNCTIONING PROPERLY IF THERE IS A 40% CHANCE OF 0.25 INCHES OR GREATER OF PREDICTED PRECIPITATION, AND AFTER ACTUAL PRECIPITATION. A CONSTRUCTION SITE INSPECTION CHECKLIST AND INSPECTION LOG SHALL BE MAINTAINED AT THE PROJECT SITE AT ALL TIMES AND AVAILABLE FOR REVIEW BY THE ENGINEER.
17. TRASH AND CONSTRUCTION-RELATED SOLID WASTES MUST BE DEPOSITED INTO A COVERED RECEPTACLE TO PREVENT CONTAMINATION OR RAINWATER AND DISPERSAL BY WIND.
18. SEDIMENTS AND OTHER MATERIALS MAY NOT BE TRACKED FROM THE SITE BY VEHICLE TRAFFIC. THE CONSTRUCTION ENTRANCE ROADWAYS MUST BE STABILIZED SO AS TO INHIBIT SEDIMENTS FROM BEING DEPOSITED INTO THE PUBLIC WAY. ACCIDENTAL DEPOSITIONS MUST BE SWEEPED UP IMMEDIATELY AND MAY NOT BE WASHED DOWN BY RAIN OR OTHER MEANS.
19. TEMPORARY ACCESS RAMP SHOWN ON THESE PLANS IS APPROXIMATE AND IS FOR INFORMATIONAL PURPOSES. THE TEMPORARY ACCESS RAMP USED TO ACCESS THE PROJECT SITE SHOULD BE DESIGNED BY THE CONTRACTOR BASED ON CONSTRUCTION MEANS AND METHODS DEVELOPED BY THE CONTRACTOR. THE TEMPORARY ACCESS RAMP SHALL USE NATIVE SOILS AND EXISTING BOULDERS AND BE APPROVED BY THE DISTRICT PRIOR TO CONSTRUCTION. CUT AND FILL SLOPES SHALL NOT EXCEED 2H:1V. ACCESS RAMP SHALL NOT EXCEED 4H:1V SLOPE. ALL TEMPORARY GRADING FOR THE ACCESS RAMP SHALL BE BROUGHT BACK TO PRE-CONSTRUCTION CONDITIONS AFTER CONSTRUCTION IS COMPLETE.

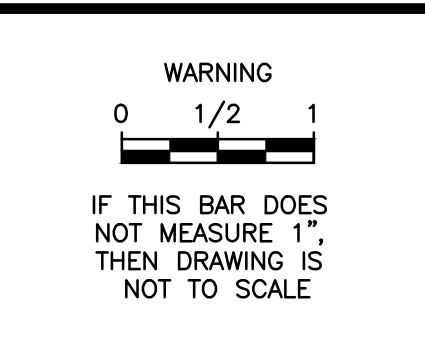
ISSUE FOR CONSTRUCTION

DESIGN: CEP CHECKED: JTZ PLOT DATE: 6/4/2024 12:30:33 PM PLOT BY: Poytress, Carrie

SURVEY INFORMATION:
 CALIFORNIA COORDINATE SYSTEM OF 1983 (CCS83), NAD83(2011), ZONE 5, EPOCH 2017.50, STATIC GNSS AND MONTECITO HIGH PRECISION GEODETIC CONTROL NETWORK AS SHOWN ON THE MAP FILED IN BOOK 212, PAGE 48 THROUGH 52 OF RECORD OF SURVEYS.
 NORTH AMERICAN VERTICAL DATUM OF 1988 (NAVD88) MONTECITO HIGH PRECISION GEODETIC NETWORK AS SHOWN ON THE MAP FILED IN BOOK 212, PAGE 48 THROUGH 52 OF RECORD OF SURVEYS.

DESIGN: JTZ
 DRAWN: GMK
 CHECKED: CEP
 BID NO.: 2024-01
 PAGE: _____
 ATLAS: _____

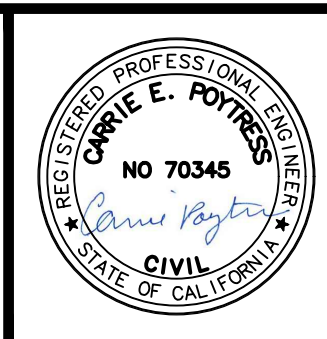
SCALE: _____
 VERT. _____
 HOR. _____



NO.	DATE	REVISION BLOCK	APPD.

PREPARED BY:

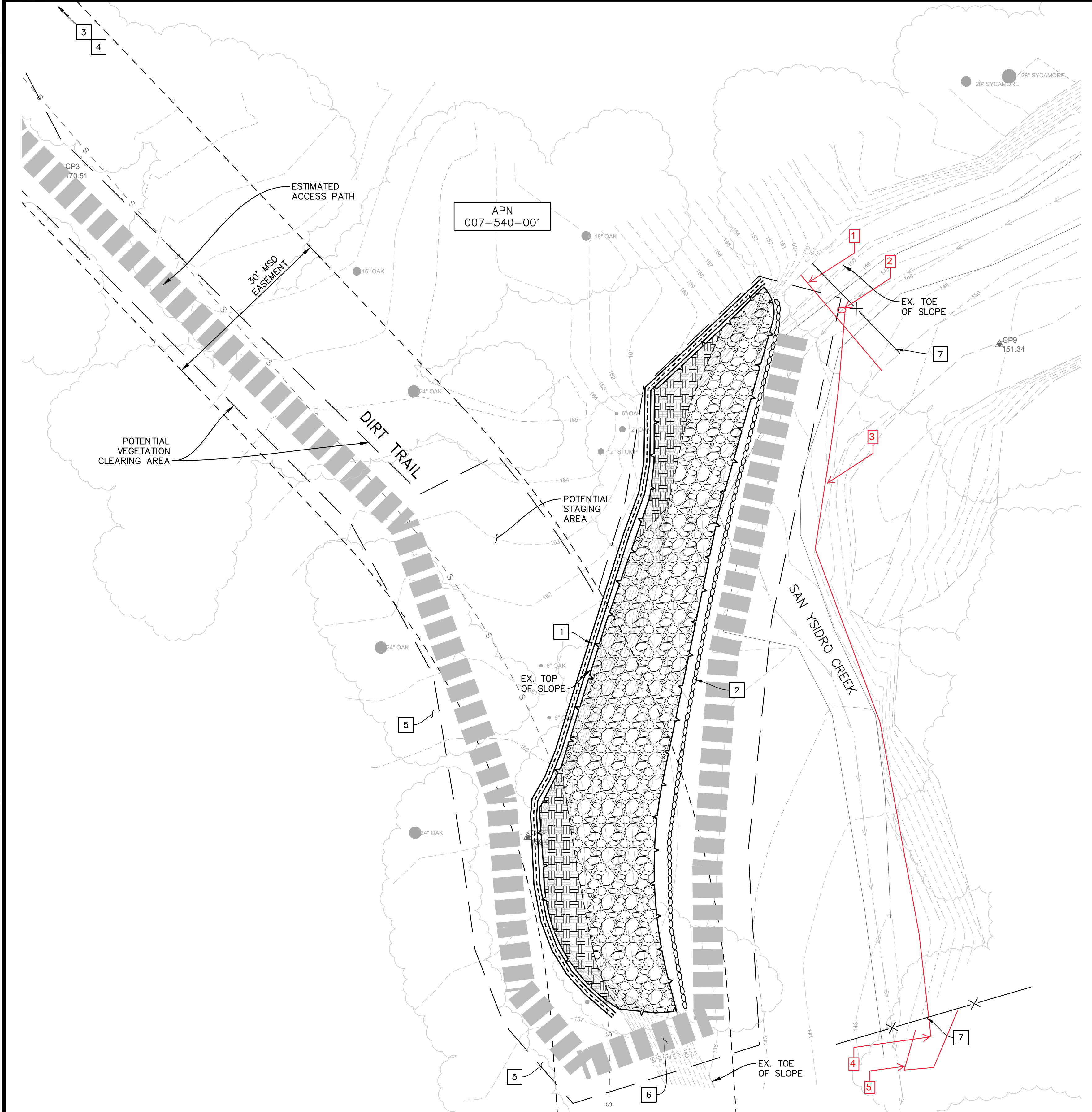
 200 E. Carrillo Street, Suite 101, Santa Barbara, CA 93101
 Phone: (805) 963-9532
 CARRIE E. POYTRESS 70,345 EXP. 09/2024
 PROJECT ENGINEER R.C.E. DATE



EROSION CONTROL PLAN AND DETAILS
PROJECT 2
MONTECITO CREEK
MSD PROTECTIVE MEASURES
 MONTECITO, CA

MSD PROJECT NO. 2024-01
 SHEET 4 OF 4
 DWG. NO. AD1-41





EROSION CONTROL IMPLEMENTATION NOTES

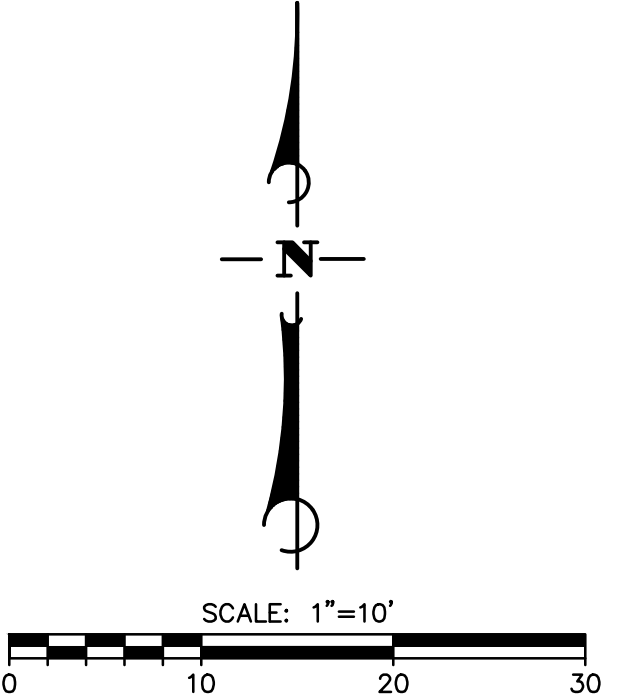
- 1 INSTALL FIBER ROLLS PER CALTRANS CONSTRUCTION SITE BMP MANUAL SC-5 TEMPORARY WATER POLLUTION CONTROL DETAIL T56.
- 2 INSTALL GRAVEL BAG/EARTHEN BERM PER CALTRANS CONSTRUCTION SITE BMP MANUAL SC-6.
- 3 INSTALL TEMPORARY CONSTRUCTION ENTRANCE/EXIT AT DIRT TRAIL/EAST VALLEY LANE CUL-DE-SAC PER CALTRANS CONSTRUCTION SITE BMP MANUAL TC-1 TEMPORARY WATER POLLUTION CONTROL DETAIL T58
- 4 INSTALL TEMPORARY ENTRANCE/OUTLET TIRE WASH AT DIRT TRAIL/EAST VALLEY LANE CUL-DE-SAC PER CALTRANS SITE BMP MANUAL TC-3.
- 5 REMOVE LANDSCAPING AND FENCING AS NECESSARY FOR ACCESS. CONTRACTOR TO REPLACES ITEMS AFTER CONSTRUCTION. DO NOT REMOVE TREES.
- 6 CONSTRUCT DIRT ACCESS RAMP AS NECESSARY TO ACCESS CREEK.
- 7 Block nets (mesh size not to exceed 3/16th-inch) will be erected upstream and downstream of the work area and placed at an angle in low-velocity flow at the direction of a qualified biologist.

DEWATERING CONSTRUCTION NOTES

1. Gravel bag/earthen berm (GB/EB) per Caltrans Construction Site BMP Manual SC-6. Install downstream of block netting along the width of the creek. GB/EB shall be stacked minimum 2' tall to allow pump functionality.
2. 5 horse power submersible pump with 3/16" mesh screening. Pump to be installed each working day prior to construction actives and removed by the end of each working day. Pump size to be verified in the field.
3. 4" lay-flat hose. Hose to be installed each working day prior to construction actives and removed by the end of each working day. Hose to be placed away from construction equipment. Hose size to be verified in the field.
4. Discharge point away from construction and downstream of block net.
5. Settling Basin. Utilize gravel bag/earthen berm (GB/EB), per Caltrans Construction Site BMP Manual SC-6, and existing bank topography/rip rap to reduce velocity discharge and capture sediment prior to water returning to main channel.

GENERAL EROSION CONTROL NOTES

1. TEMPORARY EROSION AND SEDIMENT CONTROL MEASURES SHALL USE BEST MANAGEMENT PRACTICES OUTLINED IN THE CALTRANS CONSTRUCTION SITE BMP MANUAL AND CALIFORNIA STORMWATER QUALITY ASSOCIATION (CASQA) BMP HANDBOOK
2. ALL ONSITE STOCK-PILED SOILS AND SPOILS FROM EXCAVATION SHALL BE PROTECTED AND/OR COVERED PER CALTRANS CONSTRUCTION SITE BMP MANUAL SS-9 TEMPORARY WATER POLLUTION CONTROL DETAIL (TEMPORARY COVER) T53.
3. CLEARING AND GRUBBING ACTIVITIES FOR CONSTRUCTION ACCESS AND CONSTRUCTION SITE SHALL BE IMPLEMENTED AS NECESSARY FOR ACCESS AND CONSTRUCTION ONLY. ALL BOULDERS AND ROCKS REMOVED FROM THE CONSTRUCTION SITE OR CONSTRUCTION ACCESS SHALL BE RETURNED TO PRE-CONSTRUCTION CONDITIONS.
4. THE CONTRACTOR SHALL BE RESPONSIBLE FOR MAINTAINING AND CONTROLLING ALL DRAINAGE TO AND FROM THE SITE. CONTROL OF SURFACE WATERS SHALL BE SUCH THAT EXISTING DRAINAGE PATTERNS ARE NOT DISTURBED OR ALTERED TO INCREASE THE AMOUNT AND/OR INTENSITY OF RUNOFF WATER AND SILT TO ADJACENT PRIVATE PROPERTIES, COUNTY RIGHT-OF-WAY AND EXISTING DRAINAGE STRUCTURES.
5. THE CONTRACTOR SHALL ENSURE ALL PROTECTION MEASURES ARE IN PLACE PRIOR TO THE RAINY SEASON. THE PROTECTION MEASURES MAY NEED TO BE INSTALLED DURING OTHER PARTS OF THE YEAR SHOULD RAIN BE IMMINENT.
6. THE CONTRACTOR SHALL ADJUST THE LIMITS OF THE PROTECTION MEASURES AS HIS WORK PROGRESSES.
7. THE CONTRACTOR SHALL ADJUST THE LIMITS OF THE PROTECTION MEASURES SHOULD THEY BE INADEQUATE TO CONTROL RUNOFF OF SILT LADEN WATER.
8. THE PROTECTION MEASURES MAY BE TEMPORARILY MOVED OUT OF THE CONTRACTOR'S WAY TO FACILITATE CONSTRUCTION, PROVIDED THEY ARE REINSTALLED PRIOR TO THE NEXT RAIN STORM.
9. THE CONTRACTOR SHALL ADVISE HIS CREW OF THE INTENT OF THE PROTECTION MEASURES PRIOR TO THE START OF THE RAINY SEASON. THE CREW IS ENCOURAGED TO MONITOR THE EFFECTIVENESS OF THE SYSTEM AND ALERT THE CONTRACTOR OF ANY FAILURES OR PROBLEMS.
10. STAGING, REFUELING OF EQUIPMENT AND MATERIALS STORAGE AREAS MAY CHANGE THROUGHOUT CONSTRUCTION, AS REQUIRED. THE AREAS SHALL BE INSPECTED FREQUENTLY TO ENSURE NO SPILLED HAZARDOUS MATERIALS CONTAMINATE THE GROUND. SHOULD THIS OCCUR, THE SPILL SHALL BE CLEANED UP IMMEDIATELY. REFUELING OF EQUIPMENT AND STORAGE OF HAZARDOUS MATERIALS SHALL NOT BE LOCATED NEAR STORM DRAIN INLETS, EXISTING RESIDENCES OR DRAINAGE SWALES.
11. EROSION CONTROL DEVICES SHOWN ON THIS PLAN MAY BE REMOVED WHEN APPROVED BY THE ENGINEER IF THE CONSTRUCTION OPERATION HAS PROGRESSED TO THE POINT WHERE THEY ARE NO LONGER REQUIRED.
12. THE PLACEMENT OF ADDITIONAL DEVICES TO REDUCE EROSION DAMAGE AND CONTAIN POLLUTANTS WITHIN THE SITE IS LEFT TO THE DISCRETION OF THE CONTRACTOR. ADDITIONAL DEVICES AS NEEDED SHALL BE INSTALLED TO RETAIN SEDIMENTS AND OTHER POLLUTANTS ON SITE.
13. EVERY EFFORT SHOULD BE MADE TO ELIMINATE THE DISCHARGE OF NON STORM WATER FROM THE PROJECT SITES AT ALL TIMES.
14. ERODED SEDIMENTS AND OTHER POLLUTANTS MUST BE RETAINED ON-SITE AND MAY NOT BE TRANSPORTED FROM THE SITE VIA SHEET FLOW, SWALES, AREA DRAINS, NATURAL DRAINAGE COURSES OR WIND.
15. FUELS, OILS, SOLVENTS, AND OTHER TOXIC MATERIALS MUST BE STORED IN ACCORDANCE WITH THEIR LISTING AND AREA NOT TO CONTAMINATE THE SOILS AND SURFACE WATERS. ALL APPROVED STORAGE CONTAINERS ARE TO BE PROTECTED FROM THE WEATHER. SPILLS MUST BE CLEANED UP IMMEDIATELY AND DISPOSED OF IN A PROPER MANNER. SPILLS MAY NOT BE WASHED INTO THE DRAINAGE SYSTEM.
16. CONTRACTORS ARE RESPONSIBLE TO INSPECT ALL EROSION CONTROL DEVICES BMPs ARE INSTALLED AND FUNCTIONING PROPERLY IF THERE IS A 40% CHANCE OF 0.25 INCHES OR GREATER OF PREDICTED PRECIPITATION, AND AFTER ACTUAL PRECIPITATION. A CONSTRUCTION SITE INSPECTION CHECKLIST AND INSPECTION LOG SHALL BE MAINTAINED AT THE PROJECT SITE AT ALL TIMES AND AVAILABLE FOR REVIEW BY THE ENGINEER.
17. TRASH AND CONSTRUCTION-RELATED SOLID WASTES MUST BE DEPOSITED INTO A COVERED RECEPTACLE TO PREVENT CONTAMINATION OR RAINWATER AND DISPERSAL BY WIND.
18. SEDIMENTS AND OTHER MATERIALS MAY NOT BE TRACKED FROM THE SITE BY VEHICLE TRAFFIC. THE CONSTRUCTION ENTRANCE ROADWAYS MUST BE STABILIZED SO AS TO INHIBIT SEDIMENTS FROM BEING DEPOSITED INTO THE PUBLIC WAY. ACCIDENTAL DEPOSITIONS MUST BE SWEEPED UP IMMEDIATELY AND MAY NOT BE WASHED DOWN BY RAIN OR OTHER MEANS.



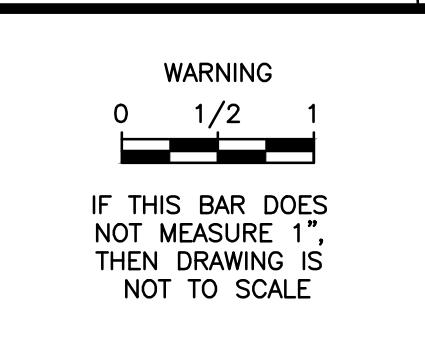
ISSUE FOR CONSTRUCTION

DESIGN: JETZ CHECKED: JETZ
34-ENG SAVE DATE: 6/4/2024 12:28:23 PM PLOT DATE: 6/5/2024 3:02:33 PM
PLOT BY: Poytress, Carrie

SURVEY INFORMATION:
CALIFORNIA COORDINATE SYSTEM OF 1983 (CCS83), NAD83(2011), ZONE 5, EPOCH 2017.50, STATIC GNSS AND MONTECITO HIGH PRECISION GEODETIC CONTROL NETWORK AS SHOWN ON THE MAP FILED IN BOOK 212, PAGE 48 THROUGH 52 OF RECORD OF SURVEYS.
NORTH AMERICAN VERTICAL DATUM OF 1988 (NAVD88), MONTECITO HIGH PRECISION GEODETIC NETWORK AS SHOWN ON THE MAP FILED IN BOOK 212, PAGE 48 THROUGH 52 OF RECORD OF SURVEYS.

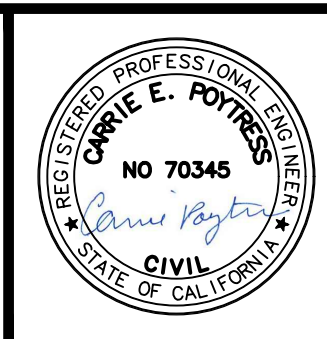
DESIGN: JETZ
DRAWN: GMK
CHECKED: CEP
BID NO.: 2024-01
PAGE: _____
ATLAS: _____

SCALE:
VERT. _____
HOR. _____



NO.	DATE	REVISION BLOCK	APPD.

PREPARED BY:
Stantec
200 E. Carrillo Street, Suite 101, Santa Barbara, CA 93101
Phone: (805) 963-9532
CARRIE E. POYTRESS 70,345 EXP. 09/2024
PROJECT ENGINEER R.C.E. DATE



EROSION CONTROL PLAN AND DETAILS
PROJECT 3
SAN YSIDRO CREEK
MSD PROTECTIVE MEASURES
MONTECITO, CA

MSD PROJECT NO.
2024-01
SHEET
4 OF 4
DWG. NO.
EXT. A-52-18





PROJECT: PROTECTIVE MEASURES OF DISTRICT FACILITIES (JANUARY 2023 STORM)
 BID NO.: 2024-01

PREPARED: September 27, 2024

DESCRIPTION:

1. Relocation of Owner Construction Materials for Project 2.

Additional Cost = \$11,622.00

Total Additional Cost = \$11,622.00
Total Additional Working Days = 2

REASON FOR CHANGE:

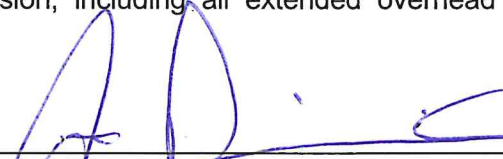
1. At the time of finalizing the project bid specifications (May 2024), it was anticipated a clear path would be available for our contractor to execute work. The Owner of 204 Olive Mill has construction work happening on the property. Significant piles of lumber as well as a 40' dumpster are in our required working area and blocking execution the project. The Owner is fine with the materials to be temporarily relocated, but would not move them on own accord. Therefore, the District requested Cushman to relocate the material to perform the project work and put back once the project work is done. Additional contract working days were discussed between the District and Cushman; two days was adequate for this scope.

Original Contract Amount.....	\$1,154,865.00
Total Contract Amount Change by Previous Change Orders.....	\$84,710.00
Contract Amount Prior to this Change Order:.....	\$1,239,575.00
Contract Amount to be Increased by this Change Order.....	\$11,622.00
Final Adjusted Contract Amount.....	\$1,251,197.00
Original Contract Working Days.....	44 Days
Total Change of Contract Working Days by Previous Change Orders.....	4 Days
Contract Working Days Prior to Change Order.....	48 Days
Contract Working Days to be Increased by this Change Order.....	2 Days
Final Adjusted Working Days.....	50 Days

The changes noted above, in both time and costs, include all compensation and adjustments for all changes, both direct and indirect, including scheduling and sequence of work, equipment and material delivery, project acceleration, costs for labor, material, equipment, incidental items and supervision, and extended overhead.

This adjustment shall include full payment for all items required for such work, including, without limitation: all compensation for all direct and indirect costs for such work; costs for adjustments to scheduling and sequence of work; equipment; materials delivery; project "acceleration"; costs for labor, material, equipment and incidental items; overhead costs and supervision, including all extended overhead and office overhead of every nature and description.

ACCEPTED:

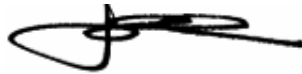


Cushman Contracting Corporation

10/01/2024

Date

APPROVED:



General Manager, Montecito Sanitary District

10/01/2024

Date

Attachments:

- Cushman Proposal dated September 27, 2024

DISTRIBUTION:

Jim Dinning, Cushman Contracting, jim@cushmancontracting.com
Lee Cushman, Cushman Contracting, lrc@cushmancontracting.com
Frankie Ortiz, Cushman Contracting, frankie@cushmancontracting.com
Alex Chapman, MNS Engineers, achapman@mnsengineers.com
Jason Mate, MNS Engineers, jmate@mnsengineers.com
Carrie Poytress, Stantec, carrie.poytress@stantec.com
Bryce Swetek, MSD, bswetek@montsan.org
John Weigold, MSD, jweigold@montsan.org
Ricardo Larroude, MSD, rlarroude@montsan.org

CUSHMAN CONTRACTING CORPORATION

Santa Barbara, CA

Est. 1969

Montecito Sanitary District (MSD)

09/27/2024

1042 Monte Cristo Lane

Santa Barbara, CA 93101

ATTN: Bryce Swetek, P.E.

Engineering Manager

REF: MSD Protective Measures of District Facilities

Subject: Change Order for Relocation of Property Owners Materials at Site 2

Mr. Swetek,

After yesterday's meeting with District representatives and owner of property at location 2. We have been directed to proceed with relocating the property's owner materials which are blocking our access and staging areas. This work will take two days to complete due to moving materials away from our jobsite and staging material back to preexisting conditions per owners direction. Please see below the amount required to complete the additional work.

Location number two (204 Olive Mill)

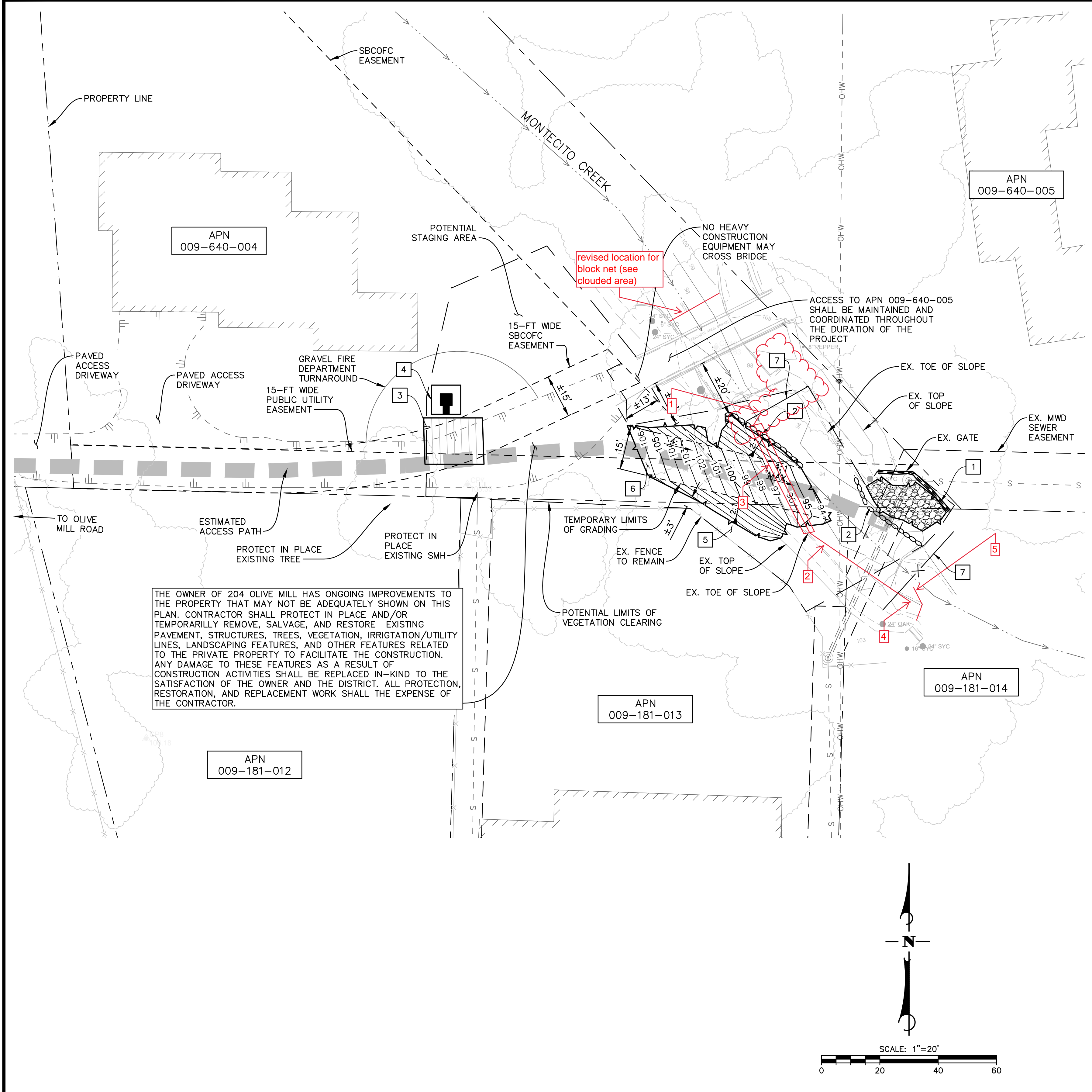
- \$11,622

We plan to start work at location #2 on September 30th. Our goal is to beat the weather and complete the project. We would appreciate a quick turnaround on Change Order so we may proceed with the additional work at location 2. If you have any questions or would like to discuss this change order in more detail, please contact Jim Dinning or myself.

Sincerely,



Frankie Ortiz



EROSION CONTROL IMPLEMENTATION NOTES

1. INSTALL FIBER ROLLS PER CALTRANS CONSTRUCTION SITE BMP MANUAL SC-5 TEMPORARY WATER POLLUTION CONTROL DETAIL T56.
2. INSTALL GRAVEL BAG/EARTHEN BERM PER CALTRANS CONSTRUCTION SITE BMP MANUAL SC-6.
3. INSTALL TEMPORARY CONSTRUCTION ENTRANCE/EXIT WITH CORRUGATED STEEL PANELS PER CALTRANS CONSTRUCTION SITE BMP MANUAL TC-1 TEMPORARY WATER POLLUTION CONTROL DETAIL T58.
4. INSTALL TEMPORARY ENTRANCE/EXIT TIRE WASH PER CALTRANS SITE BMP MANUAL TC-3.
5. REMOVE LANDSCAPING AND BOULDERS AS NECESSARY FOR ACCESS. CONTRACTOR TO REPLACE ITEMS AFTER CONSTRUCTION. EXISTING FENCE TO REMAIN IN PLACE.
6. CONSTRUCT TEMPORARY DIRT ACCESS RAMP AS NECESSARY TO ACCESS CREEK.
7. Block nets (mesh size not to exceed 3/16th-inch) will be erected upstream and downstream of the work area and placed at an angle in low-velocity flow at the direction of a qualified biologist.

DEWATERING CONSTRUCTION NOTES

1. 5 horse power submersible pump with 3/16" mesh screening. Pump shall be located in existing pool of water, where there is a natural low spot and no sand bags are required. Pump to be installed each working day prior to construction activities and removed by the end of each working day. Pump size to be verified in the field.
2. 4" lay-flat hose. Hose to be installed each working day prior to construction activities and removed by the end of each working day. Hose to be placed away from construction equipment. Hose size to be verified in the field.
3. 12" steel casing. Casing to be installed under earthen ramp and shall remain until project completion. Hose shall be installed within the casing to avoid constructing equipment. Casing size to be field verified.
4. Discharge point away from construction and downstream of block net.
5. Settling Basin. Utilize GB/EB, per Caltrans Construction Site BMP Manual SC-6, and existing bank topography/rip rap to reduce velocity discharge and capture sediment prior to water returning to main channel.

GENERAL EROSION CONTROL NOTES

1. TEMPORARY EROSION AND SEDIMENT CONTROL MEASURES SHALL USE BEST MANAGEMENT PRACTICES OUTLINED IN THE CALTRANS CONSTRUCTION SITE BMP MANUAL AND CALIFORNIA STORMWATER QUALITY ASSOCIATION (CASQA) BMP HANDBOOK.
2. ALL ONSITE STOCK-PILED SOILS AND SPOILS FROM EXCAVATION SHALL BE PROTECTED AND/OR COVERED PER CALTRANS CONSTRUCTION SITE BMP MANUAL SS-9 TEMPORARY WATER POLLUTION CONTROL DETAIL (TEMPORARY COVER) T53.
3. CLEARING AND GRUBBING ACTIVITIES FOR CONSTRUCTION ACCESS AND CONSTRUCTION SITE SHALL BE IMPLEMENTED AS NECESSARY FOR ACCESS AND CONSTRUCTION ONLY. ALL BOULDERS, ROCKS, AND FENCING REMOVED FROM THE CONSTRUCTION SITE OR CONSTRUCTION ACCESS SHALL BE RETURNED TO PRE-CONSTRUCTION CONDITIONS.
4. THE CONTRACTOR SHALL BE RESPONSIBLE FOR MAINTAINING AND CONTROLLING ALL DRAINAGE TO AND FROM THE SITE. CONTROL OF SURFACE WATERS SHALL BE SUCH THAT EXISTING DRAINAGE PATTERNS ARE NOT DISTURBED OR ALTERED TO INCREASE THE AMOUNT AND/OR INTENSITY OF RUNOFF WATER AND SILT TO ADJACENT PRIVATE PROPERTIES, COUNTY RIGHT-OF-WAY AND EXISTING DRAINAGE STRUCTURES.
5. THE CONTRACTOR SHALL ENSURE ALL PROTECTION MEASURES ARE IN PLACE PRIOR TO THE RAINY SEASON. THE PROTECTION MEASURES MAY NEED TO BE INSTALLED DURING OTHER PARTS OF THE YEAR SHOULD RAIN BE IMMINENT.
6. THE CONTRACTOR SHALL ADJUST THE LIMITS OF THE PROTECTION MEASURES AS HIS WORK PROGRESSES.
7. THE CONTRACTOR SHALL ADJUST THE LIMITS OF THE PROTECTION MEASURES SHOULD THEY BE INADEQUATE TO CONTROL RUNOFF OF SILT LADEN WATER.
8. THE PROTECTION MEASURES MAY BE TEMPORARILY MOVED OUT OF THE CONTRACTOR'S WAY TO FACILITATE CONSTRUCTION, PROVIDED THEY ARE REINSTALLED PRIOR TO THE NEXT RAIN STORM.
9. THE CONTRACTOR SHALL ADVISE HIS CREW OF THE INTENT OF THE PROTECTION MEASURES PRIOR TO THE START OF THE RAINY SEASON. THE CREW IS ENCOURAGED TO MONITOR THE EFFECTIVENESS OF THE SYSTEM AND ALERT THE CONTRACTOR OF ANY FAILURES OR PROBLEMS.
10. STAGING, REFUELING OF EQUIPMENT AND MATERIALS STORAGE AREAS MAY CHANGE THROUGHOUT CONSTRUCTION, AS REQUIRED. THE AREAS SHALL BE INSPECTED FREQUENTLY TO ENSURE NO SPILLED HAZARDOUS MATERIALS CONTAMINATE THE GROUND. SHOULD THIS OCCUR, THE SPILL SHALL BE CLEANED UP IMMEDIATELY. REFUELING OF EQUIPMENT AND STORAGE OF HAZARDOUS MATERIALS SHALL NOT BE LOCATED NEAR STORM DRAIN INLETS, EXISTING RESIDENCES OR DRAINAGE SWALES.
11. EROSION CONTROL DEVICES SHOWN ON THIS PLAN MAY BE REMOVED WHEN APPROVED BY THE ENGINEER IF THE CONSTRUCTION OPERATION HAS PROGRESSED TO THE POINT WHERE THEY ARE NO LONGER REQUIRED.
12. THE PLACEMENT OF ADDITIONAL DEVICES TO REDUCE EROSION DAMAGE AND CONTAIN POLLUTANTS WITHIN THE SITE IS LEFT TO THE DISCRETION OF THE CONTRACTOR. ADDITIONAL DEVICES AS NEEDED SHALL BE INSTALLED TO RETAIN SEDIMENTS AND OTHER POLLUTANTS ON SITE.
13. EVERY EFFORT SHOULD BE MADE TO ELIMINATE THE DISCHARGE OF NON STORM WATER FROM THE PROJECT SITES AT ALL TIMES.
14. ERODED SEDIMENTS AND OTHER POLLUTANTS MUST BE RETAINED ON-SITE AND MAY NOT BE TRANSPORTED FROM THE SITE VIA SHEET FLOW, SWALES, AREA DRAINS, NATURAL DRAINAGE COURSES OR WIND.
15. FUELS, OILS, SOLVENTS, AND OTHER TOXIC MATERIALS MUST BE STORED IN ACCORDANCE WITH THEIR LISTING AND AREA NOT TO CONTAMINATE THE SOILS AND SURFACE WATERS. ALL APPROVED STORAGE CONTAINERS ARE TO BE PROTECTED FROM THE WEATHER. SPILLS MUST BE CLEANED UP IMMEDIATELY AND DISPOSED OF IN A PROPER MANNER. SPILLS MAY NOT BE WASHED INTO THE DRAINAGE SYSTEM.
16. CONTRACTORS ARE RESPONSIBLE TO INSPECT ALL EROSION CONTROL DEVICES BMPs ARE INSTALLED AND FUNCTIONING PROPERLY IF THERE IS A 40% CHANCE OF 0.25 INCHES OR GREATER OF PREDICTED PRECIPITATION, AND AFTER ACTUAL PRECIPITATION. A CONSTRUCTION SITE INSPECTION CHECKLIST AND INSPECTION LOG SHALL BE MAINTAINED AT THE PROJECT SITE AT ALL TIMES AND AVAILABLE FOR REVIEW BY THE ENGINEER.
17. TRASH AND CONSTRUCTION-RELATED SOLID WASTES MUST BE DEPOSITED INTO A COVERED RECEPTACLE TO PREVENT CONTAMINATION OR RAINWATER AND DISPERSAL BY WIND.
18. SEDIMENTS AND OTHER MATERIALS MAY NOT BE TRACKED FROM THE SITE BY VEHICLE TRAFFIC. THE CONSTRUCTION ENTRANCE ROADWAYS MUST BE STABILIZED SO AS TO INHIBIT SEDIMENTS FROM BEING DEPOSITED INTO THE PUBLIC WAY. ACCIDENTAL DEPOSITIONS MUST BE SWEEPED UP IMMEDIATELY AND MAY NOT BE WASHED DOWN BY RAIN OR OTHER MEANS.
19. TEMPORARY ACCESS RAMP SHOWN ON THESE PLANS IS APPROXIMATE AND IS FOR INFORMATIONAL PURPOSES. THE TEMPORARY ACCESS RAMP USED TO ACCESS THE PROJECT SITE SHOULD BE DESIGNED BY THE CONTRACTOR BASED ON CONSTRUCTION MEANS AND METHODS DEVELOPED BY THE CONTRACTOR. THE TEMPORARY ACCESS RAMP SHALL USE NATIVE SOILS AND EXISTING BOULDERS AND BE APPROVED BY THE DISTRICT PRIOR TO CONSTRUCTION. CUT AND FILL SLOPES SHALL NOT EXCEED 2H:1V. ACCESS RAMP SHALL NOT EXCEED 4H:1V SLOPE. ALL TEMPORARY GRADING FOR THE ACCESS RAMP SHALL BE BROUGHT BACK TO PRE-CONSTRUCTION CONDITIONS AFTER CONSTRUCTION IS COMPLETE.

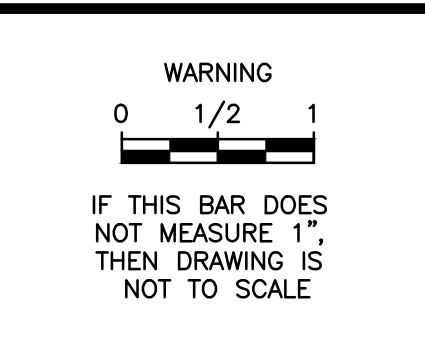
ISSUE FOR CONSTRUCTION

DESIGN: CEP CHECKED: JTZ PLOT DATE: 6/4/2024 12:30:33 PM PLOT BY: Poytress, Carrie

SURVEY INFORMATION:
 CALIFORNIA COORDINATE SYSTEM OF 1983 (CCS83), NAD83(2011), ZONE 5, EPOCH 2017.50, STATIC GNSS AND MONTECITO HIGH PRECISION GEODETIC CONTROL NETWORK AS SHOWN ON THE MAP FILED IN BOOK 212, PAGE 48 THROUGH 52 OF RECORD OF SURVEYS.
 NORTH AMERICAN VERTICAL DATUM OF 1988 (NAVD88) MONTECITO HIGH PRECISION GEODETIC NETWORK AS SHOWN ON THE MAP FILED IN BOOK 212, PAGE 48 THROUGH 52 OF RECORD OF SURVEYS.

DESIGN: JTZ
 DRAWN: GMK
 CHECKED: CEP
 BID NO.: 2024-01
 PAGE: _____
 ATLAS: _____

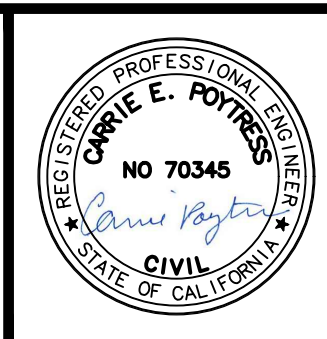
SCALE: _____
 VERT. _____
 HOR. _____



NO.	DATE	REVISION BLOCK	APPD.

PREPARED BY:

 200 E. Carrillo Street, Suite 101, Santa Barbara, CA 93101
 Phone: (805) 963-9532
 CARRIE E. POYTRESS 70,345 EXP. 09/2024
 PROJECT ENGINEER R.C.E. DATE



EROSION CONTROL PLAN AND DETAILS
PROJECT 2
MONTECITO CREEK
MSD PROTECTIVE MEASURES
 MONTECITO, CA

MSD PROJECT NO. 2024-01
SHEET 4 OF 4
DWG. NO. AD1-41

